

RECOVERY SERIES BACKUP

ALL-IN-ONE BACKUP APPLIANCES FOR SIMPLER, SMARTER IT



Recover with Confidence

Unitrends all-in-one appliances protect from all sides—from ransomware to disaster to deleted files.



Recovery Series appliances combine backup software, storage, compute, & cloud into one secure box.

- **No FINGER POINTING**
Disruptive all-in-one approach removes backup complexity, with “one-throat-to-choke” support.
- **LESS MANAGEMENT**
Pre-integrated backup appliances and intuitive software cut management time by 50%.
- **MORE FLEXIBILITY**
Backup appliances grow with your business. Easily scale up, out, and to the cloud.
- **MORE UPTIME**
Reduce downtime with instant recovery, ransomware detection, and automated disaster recovery testing.
- **MORE CONFIDENCE**
SLA policy automation proves recoverability and compliance – define, analyze, and report.
- **MORE FREE TIME**
Predictive analytics proactively identify recovery issues. Spend your free time on other tasks.



Recovery Series

Unitrends Recovery Series purpose-built backup appliances make it easy to meet your SLAs. No more broken promises. That's Simpler, Smarter IT.

12 MODELS AVAILABLE, RANGING FROM 2 TB TO 180 TB

SLA Policy Automation —

Define & schedule backups in one easy step based on your RTO and RPO goals.

Automatic ransomware protection —

Built-in AI detects and alerts to ransomware.

Cloud empowered —

Unitrends Cloud, Unitrends DRaaS, public clouds.

Automated disaster recovery testing —

With recovery analytics and RPO/RTO reports.

Preconfigured, enterprise-class reporting —

Easily satisfy compliance requirements & your boss.

Instant Recovery and Unitrends Bridge —

One click transforms Windows servers into VMs; instantly recover without setting up new hardware.

Automated provisioning — Instant creation of isolated, fully featured test and dev environments.

Unified bare metal backup —

1-pass dissimilar bare metal restore.

WAN-optimized replication —

Combines deduplication, acceleration, compression, and military-grade encryption.

Local archiving —

Disk-to-disk-to-any (D2D2X) to removable media, including tape and SATA disk.

Best-in-class backup for physical & virtual workloads —

VMware, Hyper-V, Windows, Nutanix, and more.

Adaptive Deduplication™ —

Global and inline for maximum storage efficiency.

Near continuous data protection —

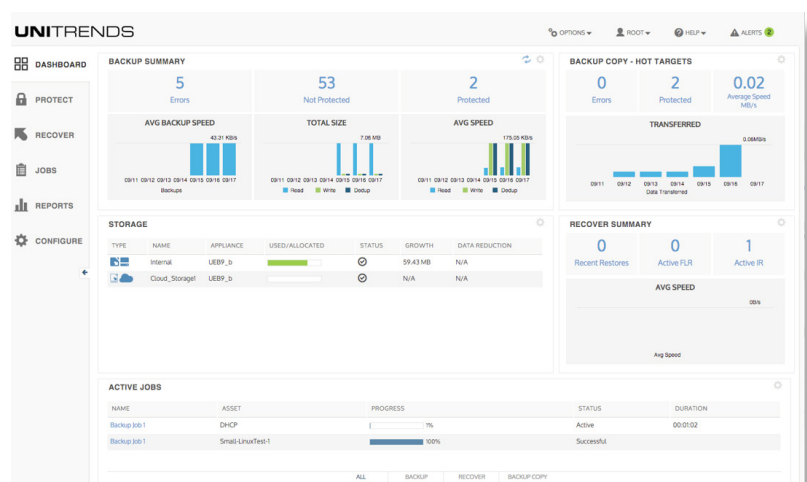
Backup as often as every 60 seconds.

Intuitive, centralized user interface —

Manage all of your backups, reports, & archiving from one console.

24/7/365 Support —

Based in the U.S. with a 98% customer satisfaction rate.



Recovery Series Backup Appliance Specifications

	602	604	606	608	814S	818S	824S	926S	928S	938S	944S	946S
Usable Capacity (TB)	2	4	6	8	12	16	24	36	72	96	120	180
Suggested Backup (TB)	1.1	2.4	3.6	4.8	7.2	9.4	15	22	44	63	80	118
Form Factor	Short	Short	Short	Short	1U	1U	2U	2U	2U	3U	4U	4U
Processor Cores/ Threads	4/4	4/4	8/8	8/8	4/8	4/8	16/32	16/32	16/32	16/32	20/40	20/40
RAM (GB)	8	8	16	16	16	32	64	128	256	256	256	256
AES-NI	✗	✓	✓	✓	✓	✓	✓	✓	✓	✓	✓	✓
IPMI	✗	✗	✗	✗	✓	✓	✓	✓	✓	✓	✓	✓
Hot Swap Drives	✗	✗	✗	✗	OS/Backup	OS/Backup	OS/Backup	OS/Backup	OS/Backup	OS/Backup	OS/Backup	OS/Backup
PCI Slots	✗	✗	✗	✗	3	3	5	5	5	5	5	5
1 GB Ethernet Ports	1	1	1	1	2	2	✗	✗	✗	✗	✗	✗
4x1 GB Ethernet	✗	✗	✗	✗	*	*	*	*	*	*	*	*
2x 1/10Gbit RJ45 Copper Ethernet*	✗	✗	✗	✗	*	*	✓	✓	✓	✓	✓	✓
1x8 GB Fibre Channel	✗	✗	✗	✗	*	*	*	*	*	*	*	*
STORAGE	602	604	606	608	814S	818S	824S	926S	928S	938S	944S	946S
SSD Flash (in GBs)	✗	✗	✗	✗	256	256	256	256	256	256	256	256
OS Disk (in TBs)	✗	✗	✗	✗	✗	✗	2x1	2x1	2x1	2x1	2x2	2x2
Backup Disk (in TBs)	2x2	2x4	2x6	2x8	4x4	4x8	8x4	8x6	11x8	16x8	34x4	34x6
RAID	1	1	1	1	5	10	1/6	1/6	1/6	1/60	1/60	1/60
ARCHIVING CONTROLLER	602	604	606	608	814S	818S	824S	926S	928S	938S	944S	946S
USB 3.0	✓	✓	✓	✓	✓	✓	✓	✓	✓	✓	✓	✓
eSATA - 4 Port	✗	✗	✗	✗	*	*	✓	✓	✓	✓	✓	✓
SAS Controller (Disk, Tape)	✗	✗	✗	✗	*	*	*	*	*	*	*	*
MAJOR FEATURES	602	604	606	608	814S	818S	824S	926S	928S	938S	944S	946S
Comprehensive Backup for Physical, Virtual, Nutanix, Cisco UCS See 250+ Supported Systems	✓	✓	✓	✓	✓	✓	✓	✓	✓	✓	✓	✓
Adaptive Deduplication	✓	✓	✓	✓	✓	✓	✓	✓	✓	✓	✓	✓
Unitrends Cloud & DRaaS Enabled	✓	✓	✓	✓	✓	✓	✓	✓	✓	✓	✓	✓
Integration with AWS & Azure Clouds	✓	✓	✓	✓	✓	✓	✓	✓	✓	✓	✓	✓
Replication Target & Cross Replication	✓	✓	✓	✓	✓	✓	✓	✓	✓	✓	✓	✓
Single Pane of Glass User Interface	✓	✓	✓	✓	✓	✓	✓	✓	✓	✓	✓	✓
Hot/Cold & Dissimilar Bare Metal	✓	✓	✓	✓	✓	✓	✓	✓	✓	✓	✓	✓
AES-256 Bit Encryption	✓	✓	✓	✓	✓	✓	✓	✓	✓	✓	✓	✓
Instant Recovery (P2V); (V2V); (V2P)	✓	✓	✓	✓	✓	✓	✓	✓	✓	✓	✓	✓
VMware and Windows Replicas	✓	✓	✓	✓	✓	✓	✓	✓	✓	✓	✓	✓

✓ Included + Included in Enterprise Plus Editions * Optional ✗ Not Available

* 2x10 GbE RJ45 Copper is standard on the 824S and up. Supports 10GBASE-T, 100BASE-TX, 1000BASE-T, and 10000BASE-T. SFP+ Fiber can optionally be added.

Recovery Series Backup Appliance Specifications

	602	604	606	608	814S	818S	824S	926S	928S	938S	944S	946S
NDMP Backup (EMC, NetApp)	✗	✗	✗	✗	+	+	+	+	+	+	+	+
Automatic Ransomware Detection	✓	✓	✓	✓	✓	✓	✓	✓	✓	✓	✓	✓
Backup Scheduling	✓	✓	✓	✓	✓	✓	✓	✓	✓	✓	✓	✓
Inclusion/Exclusion Backup	✓	✓	✓	✓	✓	✓	✓	✓	✓	✓	✓	✓
Bandwidth Throttling	✓	✓	✓	✓	✓	✓	✓	✓	✓	✓	✓	✓
Comprehensive Reporting	✓	✓	✓	✓	✓	✓	✓	✓	✓	✓	✓	✓
Alert-Based Monitoring	✓	✓	✓	✓	✓	✓	✓	✓	✓	✓	✓	✓
Hardware Failure Alerts	✓	✓	✓	✓	✓	✓	✓	✓	✓	✓	✓	✓
SLA Policy Automation	✓	✓	✓	✓	✓	✓	✓	✓	✓	✓	✓	✓
Integration with RESTful API	✓	✓	✓	✓	✓	✓	✓	✓	✓	✓	✓	✓
Enterprise Application Backup	✓	✓	✓	✓	✓	✓	✓	✓	✓	✓	✓	✓
Role-based Access Control	✓	✓	✓	✓	✓	✓	✓	✓	✓	✓	✓	✓
Security-Integrated Copy Data Management (CDM)	+	+	+	+	+	+	+	+	+	+	+	+
Distributed Enterprise Manager	+	+	+	+	+	+	+	+	+	+	+	+
Scheduled Automated DR Testing	+	+	+	+	+	+	+	+	+	+	+	+
Automated Failover	+	+	+	+	+	+	+	+	+	+	+	+
RTO/RPO Compliance Reporting	+	+	+	+	+	+	+	+	+	+	+	+
Recovery Analytics	+	+	+	+	+	+	+	+	+	+	+	+
Failover/Failback to AWS/Azure	+	+	+	+	+	+	+	+	+	+	+	+
Unlimited Granular Exchange Recovery	+	+	+	+	+	+	+	+	+	+	+	+
Pledge Evergreen Hardware	*	*	*	*	*	*	*	*	*	*	*	*
PLATFORM CHARACTERISTICS	602	604	606	608	814S	818S	824S	926S	928S	938S	944S	946S
Width (inches)	16.8 (426 mm)	16.8 (426 mm)	16.8 (426 mm)	16.8 (426 mm)	17.2 (437 mm)	17.2 (437 mm)	17.2 (437 mm)	17.2 (437 mm)	17.2 (437 mm)	17.2 (437 mm)	17.2 (437 mm)	17.2 (437 mm)
Height (inches)	1.7 (43 mm)	1.7 (43 mm)	1.7 (43 mm)	1.7 (43 mm)	1.7 (43 mm)	1.7 (43 mm)	3.5 (89 mm)	3.5 (89 mm)	3.5 (89 mm)	5.2 (132 mm)	7 (178 mm)	7 (178 mm)
Depth (inches)	14 (356 mm)	14 (356 mm)	14 (356 mm)	14 (356 mm)	25.6 (650 mm)	25.6 (650 mm)	25.5 (647 mm)	25.5 (647 mm)	25.5 (647 mm)	25.5 (647 mm)	27.5 (699 mm)	27.5 (699 mm)
Unit Weight (Pounds)	14 (6.4 kg)	14 (6.4 kg)	14 (6.4 kg)	14 (6.4 kg)	32 (14.5 kg)	32 (14.5 kg)	69 (31.3 kg)	69 (31.3 kg)	69 (31.3 kg)	93 (42.2 kg)	122 (55.3 kg)	122 (55.3 kg)
Shipping Weight (Pounds)	18 (8.2 kg)	18 (8.2 kg)	18 (8.2 kg)	18 (8.2 kg)	45 (20.4 kg)	45 (20.4 kg)	76 (34.5 kg)	76 (34.5 kg)	76 (34.5 kg)	100 (45.4 kg)	154 (69.9 kg)	154 (69.9 kg)
AC Inputs (VAC)	100/240	100/240	100/240	100/240	100/240	100/240	100/240	100/240	100/240	100/240	100/240	100/240
AC Power Consumption (W)	200	200	200	200	500	500	920	920	920	920	1000	1000
Redundant Power Supply	✗	✗	✗	✗	✓	✓	✓	✓	✓	✓	✓	✓
Heat Generated While Operating (BTUs)	1023	1023	1023	1023	2081	2081	3750	3750	3750	3750	4100	4100
Non-Operating Vibration	350	350	350	350	350	350	350	350	350	350	350	350
Operating Shock (2ms(Gs))	65	65	65	65	65	65	65	65	65	65	65	65
Non-Operating Shock (1ms(Gs))	350	350	350	350	350	350	350	350	350	350	350	350

✓ Included + Included in Enterprise Plus Editions * Optional ✗ Not Available